

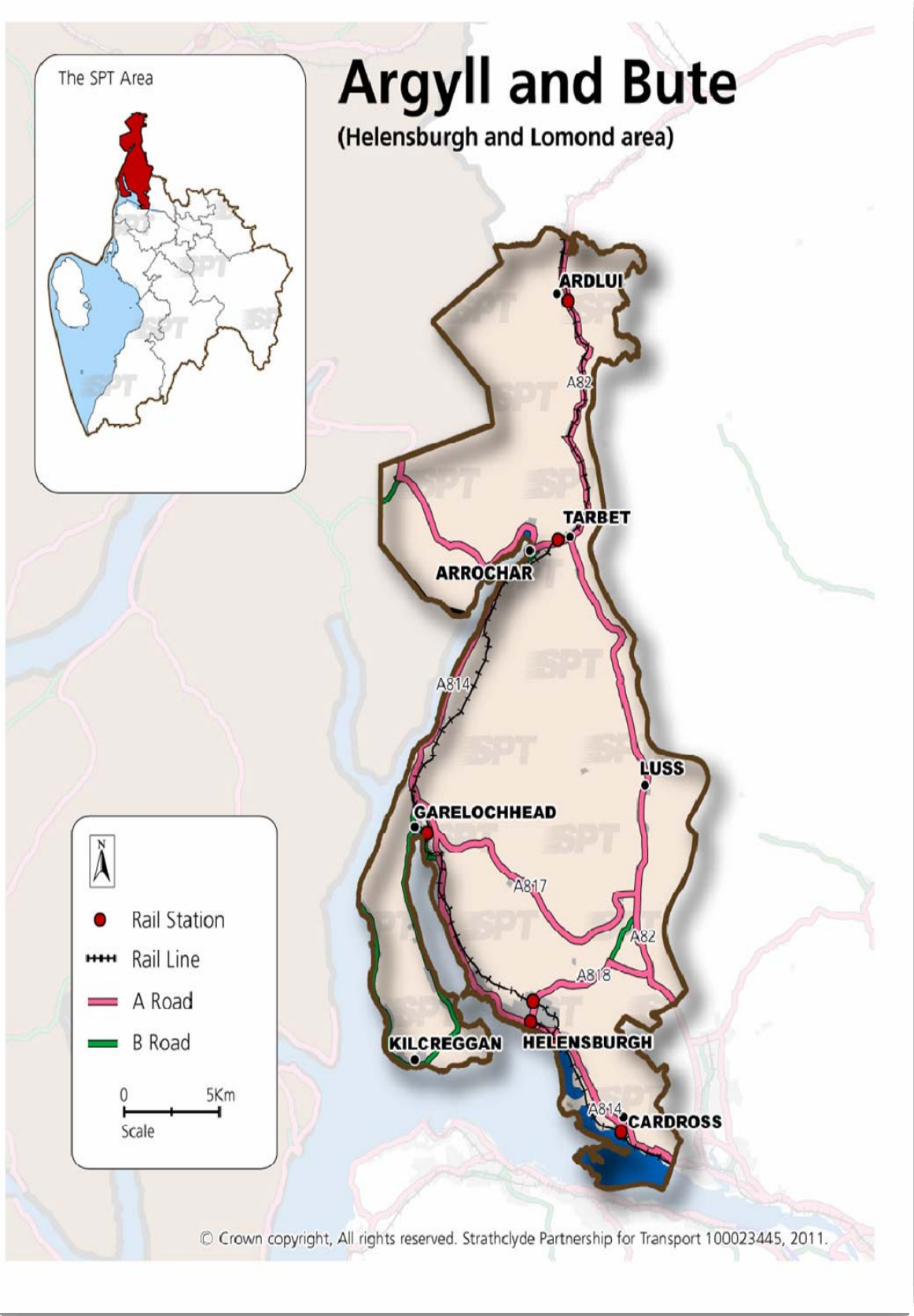


Strathclyde Partnership for Transport
Transport Outcomes Report:
Argyll & Bute 2012/13



in partnership with





Cover image: Luss Village

1. Introduction

Strathclyde Partnership for Transport (SPT) is the Regional Transport Partnership¹ for the west of Scotland and is made up of twelve councils, of which Argyll and Bute Council (ABC)² is an integral partner. Within the SPT area there is a population of 2.16 million (41% of Scotland's total) of which 1.2% (25,434) live in the Helensburgh and Lomond area of Argyll and Bute³.

SPT delivers transport solutions across the Strathclyde area and has a number of planning and operational responsibilities that deliver significant benefits to residents and businesses in Argyll and Bute. These services include the management of socially necessary and demand responsive bus services; operation of the Subway; capital investment in regional transport projects for all modes; the operation of regional bus stations/interchanges; the administration of the regional ticketing scheme (ZoneCard); and acting as the secretariat to the Strathclyde Concessionary Travel Scheme. SPT's planning and operational expertise is also utilised by the Council via an agency arrangement for bus stop maintenance. All of SPT's operational services and planning for the wider regional network are underpinned by SPT's transport planning expertise which is an integral part of local planning and development processes in the ABC area. This includes responding to and influencing key transport consultations.

SPT is a committed Community Planning partner and this report demonstrates how SPT will help the Argyll and Bute Community Planning Partnership meet the Local Outcomes in the Single Outcome Agreement (SOA).

This report provides further details about SPT's activities in and for Argyll and Bute and the benefits of these. The report is structured as follows:

- **Section 2:** provides a summary of the services delivered by SPT in 2011/13 and the benefits of these services in the ABC area.
- **Section 3:** provides a look ahead to 2012/13 in terms of the transport projects and operational priorities that SPT will deliver in the ABC area.
- **Appendices:** Appendix 1 contains additional supporting detail on the benefits and services we provide together with the strategic fit with the Argyll and Bute Community Planning Partnership's SOA. Appendix 2 sets out how SPT activity is supporting the CPPs Local Outcomes.

Further information can be found on our website at www.spt.co.uk

¹ See <http://www.spt.co.uk/partnership/about> for further information

² Only the Helensburgh and Lomond area of Argyll and Bute falls within the SPT area

³ Source, National Records of Scotland, Mid year population estimates, 2010

2. Benefits of SPT services in Argyll and Bute - what has been delivered in 2011/12

The following table sets out the headline benefits of the services that SPT has delivered in the ABC area in 2011/12, (all figures quoted are approximate and are for 2011/12, unless otherwise stated). Further detailed information is contained in Appendix 1.

The Gourock / Kilcreggan ferry - £356,000 pa operating subsidy provided - service restructured to secure the long term sustainability of the service by reducing operating costs

Supported bus services – 4 contracts covered routes operating in Argyll and Bute (2 of which crossed into neighbouring Council areas) at a cost of **£290,000 pa**

MyBus – 1,100 trips – 1 contract for 2 services operated in Argyll and Bute (which also operated within West Dunbartonshire) at a cost **£100,000 pa**

Capital investment (total 09/10 – 11/12)

- Regional projects benefiting Argyll and Bute residents - **£32 million**
- Projects within Argyll and Bute – **£180,000** (including road safety journey time improvements on A814 and A818, plus support to secure government backing for A82 improvements)

Strathclyde Concessionary Travel Scheme⁴ – Provided an estimated saving on ferry, rail and Subway travel of over **£1.5 million** to Argyll and Bute residents

National Entitlement Card – Processed 910 disability card renewals and 2,800 calls answered

Travel information - Mobile Travel Centre visited 46 times

Integrated ticketing (ZoneCard)⁵ – 4,000 tickets sold to Argyll and Bute residents - estimated saving of £63,000

Bus infrastructure investment programme - £50,000 investment has provided 7 shelters installed, 2 mains power and 3 shelter illumination panels over 3 years

Subway – Around 120,000 Subway trips originated in Argyll and Bute

Buchanan bus station – 5,100 bus departures by 6 services served Argyll and Bute, all of which are long distance services

Transport planning – Responded to over 40 consultations relating to transport

⁴ Administered on behalf of the Strathclyde Concessionary Travel Scheme Joint Committee

⁵ Administered on behalf of participating operators

3. Transport priorities for Argyll and Bute 2012/13 - what we plan to deliver next

A range of transport project and operational priorities have been identified which aim to enhance the regional transport network and deliver benefits to residents and businesses of the Helensburgh and Lomond area. Many of these support the Local Outcomes identified in the Argyll and Bute SOA.

Further information on the relationship between transport projects, operational priorities and Argyll and Bute Local Outcomes can be found in Appendix 2.

3.1 Project priorities

Four transport priorities to enhance the regional transport network in Argyll and Bute have been identified and agreed with ABC. These are summarised below.

Project title	Brief Description	Partners	Year ahead timescales
Enhancing the Strategic Road network in partnership with ABC and HITRANS – seeking improvements to the A82 corridor	Continue to work with ABC, Transport Scotland and others to ensure the strategic road network in Argyll and Bute is fit for purpose and meets the needs of residents, visitors and the economy of the area.	SPT, ABC, Transport Scotland	Transport Scotland is moving forward with improvements at Pulpit Rock (A82) to remove traffic signals and restore 2-way traffic. ABC will carry out improvements in 2012 on the A814. Improvements on the A818 at Daligan Bends is a category 2 project in the 2012/13 SPT capital programme.
Deliver bus infrastructure upgrades in the Helensburgh area*	Roll-out of a programme of bus stop access improvements including shelters, tactile paving and raised kerbs.	SPT, ABC	Works ongoing including the opportunity to link with CHORD ⁶ regeneration project schemes.
Support the provision of Helensburgh town centre transport improvements*	SPT is working with ABC and others to review transport arrangements in Helensburgh, including traffic management, park and ride and coastal path improvements. A Park-and-Ride study has been undertaken to consider options to improve commuter travel to Glasgow. The needs of local people, businesses, commuters and visitors will be considered as part of this initiative.	SPT, ABC, CHORD ⁶ project team	General improvements to Helensburgh town centre to be carried out this year including new pedestrian crossing and junction improvements including DDA-compliance measures, traffic calming, streetscape/pedestrian enhancements and new signage.

⁶ The CHORD project is being undertaken by Argyll and Bute Council to assist regeneration and economic development in the five of waterfront towns of- Campbeltown, Helensburgh, Oban, Rothesay and Dunoon.

Project title	Brief Description	Partners	Year ahead timescales
Support the development of Helensburgh and Lomond Cycleways.	To promote and encourage cycling by providing segregated cycleways throughout Helensburgh and Lomond area.	SPT, ABC, SUSTRANS, LLTNP	<p>Work ongoing – some issues regarding land acquisition are not yet resolved.</p> <p>Detailed design for the Cardross to Helensburgh section being prepared.</p> <p>This is a category 2 project in SPT's 2012/13 capital programme.</p>

** SPT capital funding has been approved to take this forward in 2012/13

In addition, investment has been approved for a number of regional projects⁷ that will benefit residents of Argyll and Bute, including:

- expanding real time bus information;
- upgrading bus shelters throughout the region;
- developing proposals for strategic park and ride;
- delivering Subway Modernisation
- developing smartcard integrated ticketing; and
- improving interchanges for access to healthcare.

3.2 Ongoing operational priorities

SPT will continue to deliver benefits to Argyll and Bute through investment and delivery of a number of key operational activities, including:

- managing and administering the Strathclyde Concessionary Travel Scheme⁴ for ferry, rail and subway users;
- the provision of socially necessary bus services and the Kilcreggan – Gourock ferry service;
- the provision of Demand Responsive Transport for those who are unable to access mainstream transport (MyBus);
- managing and administering the ZoneCard⁵ multi-modal multi-operator ticket;
- providing multi-modal ticketing options such as Daytripper and Roundabout tickets;
- developing smartcard integrated ticketing for seamless travel for all public transport modes across the region;
- reviewing the existing transport network and developing plans, as appropriate, to ensure continued effectiveness and efficiency including responding to local, regional, national and where appropriate European Union consultations which could impact on the transport network and service delivery in the west of Scotland;
- engaging with ABC in the development of the Argyll and Bute Local Development Plan and the development management process;
- engaging with Loch Lomond and the Trossachs National Park, (LLTNP) in the development of the Park's Local Development Plan and the development management process;
- participating in Argyll and Bute Community Planning Partnership; and
- reviewing funding opportunities to facilitate the delivery of regional transport projects.

⁷ Approved at the Partnership meeting 30 March 2012. Projects are categorised as Category 1 within the SPT Capital Programme

Appendices

Appendix 1

Details of SPT's Activities and Benefits Delivered in Argyll and Bute

This section provides an update and more detail on the transport priorities identified in 2011/12 and expands on the information provided in section 2 of this report. All figures quoted are approximate and are for the period 2011/12 unless otherwise stated.

A1.1 Develop and deliver projects, across all modes

Progress on Priorities for 2011/12

The Argyll and Bute Transport Outcomes Report (TOR) for 2011/12 identified five transport priorities. The progress made towards achieving these is noted below.

Priority / Project	Progress
Enhancing the Strategic Road network in partnership with ABC and HITRANS – seeking improvements to the A82 corridor, the A814 and A818 and identifying improvements to the network.*	<ul style="list-style-type: none">▪ An ABC study to consider improvements to the A818 was delayed due to ongoing land ownership issues.▪ Transport Scotland initiated procurement processes for improvement works at A82 Pulpit Rock▪ Improvements to A814 to be carried out in 2012 by ABC
Providing bus infrastructure upgrades in the Helensburgh area*	<ul style="list-style-type: none">▪ Completed improvements to bus stops and a new bus shelter at Clynder▪ Completed design works for a bus turning circle at the Rest and Be Thankful
Supporting Helensburgh town centre regeneration through transport integration and encouraging modal shift.	<ul style="list-style-type: none">▪ Completed STAG studies and demand modelling to identify suitable sites for additional park and ride in the Helensburgh area
Improving transport access to Loch Lomond and the Trossachs National Park	<ul style="list-style-type: none">▪ A technical survey of the loch bed at Arrochar was undertaken in 2008 to determine the suitability of the area for piling. The study results were inconclusive▪ No progress in 2011/12.
Support the development of Helensburgh and Lomond cycleways.	<ul style="list-style-type: none">▪ Land negotiations are underway for the link between the west end of Cardross and Helensburgh▪ Detailed design for the Cardross to Helensburgh section underway▪ Helensburgh and Lomond Cycle Development was a Category 2 project in SPT's Capital Programme 2011/12

*Project received SPT capital funding in 2011/12

Capital Investment in Argyll and Bute

Over the period 2009/10 - 2011/12 a total of £180,000 has been invested in projects in Argyll and Bute (either through grant funding to the Council or delivery by SPT), including:

- improving the A814 at Keppoch;
- improving the A818 west of Daligan;
- upgrading bus infrastructure in the Helensburgh area; and
- investigating options for the provision of a park and ride site in Helensburgh.

In this period £32 million has been invested in regional projects benefiting the residents of Argyll and Bute including:

- upgrading bus shelters throughout the region;
- improving travel information across the region through the provision of additional travel information points, support to Traveline Scotland and investing in new bus stop poles, flags and information cases;
- purchasing additional buses supporting DRT and subsidised services;
- developing smartcard integrated ticketing;
- developing strategic park and ride solutions; and
- delivering Subway Modernisation.

A1.2 Operating the Subway network

Approximately 120,000 Subway trips originated in Argyll and Bute

A1.3 Supporting bus services

SPT managed 4 contracts⁸ to provide socially necessary bus services in Argyll and Bute at a cost of £290,000. This support was provided to operate services where it was not commercially viable to do so, and is often for the provision of services at weekends or evenings. Support may be provided for a full service or a part service, both in terms of route and hours of operation as market needs require.

Table 1: Socially necessary services in Argyll and Bute

Service Number	Route
302	Carrick Castle – Helensburgh - Lochgoilhead
316	Helensburgh - Coulport
305/306/ 309	Luss / Helensburgh / Balmaha – Alexandria**
340	Helensburgh/Vale of Leven Hospital – Royal Alexandra Hospital**

** Service covers multiple local authority areas

The Kilcreggan ferry was also supported by SPT at a cost of £356,000. The operation of this service has been restructured and the Helensburgh leg discontinued reflecting demand and reducing operating costs to secure the long term sustainability of the service. SPT will continue to work with the Council to ensure that this service is delivered in the most cost effective manner.

A1.4 Providing Demand Responsive Transport (DRT) – MyBus Services

SPT manages a contract⁸ for demand responsive services operating in Argyll and Bute at an annual cost of £110,000. A total of 1,100 trips were undertaken in 2011/12 utilising SPT's dedicated contact centre equipped with scheduling software.

Table 2: MyBus Services in Argyll and Bute

Service Number	Route
M10	Dumbarton MyBus**
950	Lomond MyBus Rural

** Service covers multiple local authority areas

A1.5 Investing in new vehicles

An adaptable bus purchased by SPT is operating on the Dumbarton MyBus service, resulting in a saving in the cost of providing this service and improving the standard of vehicle available.

A1.6 Delivering school transport

Argyll and Bute Council manage all school contracts within their area.

A1.7 Providing bus infrastructure

SPT operates, manages and invests in bus stations and manages and maintains bus shelters and stops.

Operating Buchanan bus station

5,100 bus departures by 6 services from Buchanan bus station serve Argyll and Bute, all of which are long distance services.

Investing in bus shelter upgrades

In 2009/10, SPT began a rolling programme to upgrade bus shelters. In total an investment of £50,000 has provided 7 new shelters, 2 mains power supplies for shelters and 3 shelter solar illumination panels.

⁸ Contract and service numbers may not be consistent due to the varied nature of the contracting process for services.

Maintaining bus stops

SPT currently has a ten year agency agreement with Argyll and Bute Council to maintain 169 bus stops until 2013. This agreement brings economies of scale in terms of contractor labour rates, work planning, quick response times and emergency call outs out-with office hours and at weekends.

A1.8 Providing travel information to the public

Operating a Mobile Travel Centre

SPT's Mobile Travel Centre visits Argyll and Bute 46 times a year visiting Garelochhead, Kilcreggan, Arrochar and Helensburgh.

Providing and maintaining bus stop information panels

SPT provides and maintains bus stop pole mounted information cases at 175 bus stops in Argyll and Bute. Cases are owned by SPT and inspected and cleaned at least once per year.

A1.9 Supporting Community Transport

SPT provides advice and development support to existing and new Community Transport organisations throughout the west of Scotland, including Argyll and Bute. SPT has established a Community Transport Network to promote improved vehicle quality, support training and encourage best practice across the Community Transport sector in the west of Scotland.

A1.10 Addressing transport affordability

As administrators of the Strathclyde Concessionary Travel Scheme, SPT works with its local authority partners to sustain the affordability of transport for elderly and disabled residents in the west of Scotland.

National Entitlement Card Administration for Argyll and Bute

Take up of concession passes by elderly people ⁹	22,500
Percentage of eligible population ¹⁰	85%
Take up by disabled people ⁹	2,700
Number of disabled card annual renewals from residents	910
First time applications from residents	200
Number of calls received annually from Argyll and Bute residents	2,800

Strathclyde Concessionary Travel Scheme¹¹

- Total value of rail and ferry travel being undertaken by residents of, or visitors to, Argyll and Bute - £1.7 million
- Annual saving to residents - £1.5 million

A1.11 Integrating transport, including transport and land-use planning

SPT is a key agency in the Local Development Plan process and prepared a detailed Technical Report on transport and land use forecasting across the Argyll and Bute area looking ahead to 2012 – 2027. This information and other SPT responses will be used to inform ABC's Proposed Plan which is due for publication late summer 2012.

SPT also engages with Argyll and Bute Council through the development management process, providing responses on planning applications which could impact on the transport network.

⁹ Source Scottish Government Bus and Coach Statistics, 2010. Figure is for the whole of the Argyll Bute area

¹⁰ Source Scottish Government Bus and Coach Statistics, 2010 and NRS mid year population estimates for 2010. Figure is for the whole of the Argyll Bute area

¹¹ Administered on behalf of the Strathclyde Concessionary Travel Scheme Joint Committee Approximate figures from value of rail and ferry concessions in Strathclyde region

A1.12 Administering integrated ticketing initiatives - ZoneCard

SPT promotes and administers a range of integrated tickets covering the west of Scotland, including ZoneCard, the biggest multi-modal ticketing scheme outside London.

Number of cards (i.e tickets) sold to Argyll and Bute residents	4,000
Estimated number of ZoneCard trips made	130,000
Estimated annual saving to residents of using ZoneCard ¹²	£63,000

A1.13 Planning the regional transport network

SPT has a key role to review the existing transport network and to develop plans, as appropriate, to ensure continued effectiveness and efficiency of the network including responding to local, regional, national and where appropriate European Union consultations which could impact on the transport network and service delivery in the west of Scotland. In 2011/12, SPT responded to over 40 transport and public policy consultations ranging from High Speed Rail, Network Rail Edinburgh Glasgow Route Utilisation Strategy, Rail 2014, the Scottish Government's Ferries Review and the Competition Commission's Review of Local Bus Market Inquiry to the Christie Commissions Review of Public Services in Scotland, Draft Core Path Plans and Main Issues Reports and Proposed Plans for Strategic and Local Development Plans.

A1.14 Addressing future ferry delivery

SPT has contributed to the Scottish Government's Draft Ferries Review and commented on proposed improvements to ferry infrastructure and service levels for the Rosneath Peninsula, as well as service linkages to the Isle of Bute and the Cowal Peninsula. Proposed improvements over the next 5-10 years should help sustain the economies of these communities. SPT will continue to support public transport initiatives, in partnership with the Scottish Government and others, to ensure that access to and from these islands can maximise opportunities for these rural areas.

A1.15 Promoting amendments to bus policy

SPT is actively engaged in policy debates around the bus market, including responding to inquiries undertaken by the Competition Commission.

A1.16 Promoting developments on the rail network

SPT has an important role in promoting improvements to the rail network across the west of Scotland in conjunction with local authority partners, Transport Scotland, Network Rail and First ScotRail. SPT is working with ABC to identify potential park and ride improvements for the Helensburgh area.

A1.17 Improving safety on regional roads

SPT has worked closely with ABC to target investment on regional roads to improve safety and reduce accidents, including the A814 and A818.

A1.18 Promoting "Smarter Choices" modal shift

SPT continues to provide a forum, through the SPT Sustainable Travel Group, for liaison between public and private sector organisations to support their employees in undertaking active travel. ABC and many other organisations are members of this group.

A1.19 Developing walking cycling initiatives

SPT promotes active travel, including working with ABC on developing Helensburgh and Lomond Cycleways.

¹² Saving: = (Composite Adult Single Fare - Average ZoneCard Single Fare) x Number of ZoneCard Journeys

Appendix 2 - SPT Argyll and Bute SOA

A2.1 SPT as a Community Planning Partner

Transport is critical to the delivery of the Scottish Government's National Outcomes and Argyll and Bute's Local Outcomes. SPT's investment programme and delivery of transport services supports the achievement of several Argyll and Bute Local Outcomes. A summary of SPT activities in support of the most relevant local outcomes is found below.

Local Outcome: Our transport infrastructure adapts and develops to meet the social and economic needs of our communities.

SPT contributes to this local outcome by supporting improvements to strategic roads to reduce congestion, improve safety and reduce journey times, by supporting park and ride improvements and by delivering high-quality, modern public transport infrastructure. Recent SPT projects, services and activities relevant to this outcome include:

- Supporting A818 and A814 improvements
- Helensburgh park and ride
- Bus infrastructure improvements

Local Outcome: Our people are supported to live more active, healthier and independent lives.

SPT contributes to this local outcome by increasing access to work, education, healthcare, retail, social and leisure opportunities for disabled and elderly people, rural communities and for those dependent upon bus services, by reducing the cost of travel for disabled and elderly people, by promoting active travel and improvements to walking and cycling infrastructure. Recent SPT projects, services and activities relevant to this outcome include:

- MyBus
- MyBus Rural
- Supported local bus services including services to regional hospitals including the Vale of Leven and Royal Alexandria hospitals
- Strathclyde Concessionary Travel Scheme
- National Entitlement Card administration

Local Outcome: We contribute to a sustainable environment

SPT contributes to this local outcome by promoting and investing in sustainable travel measures including public transport, active travel, park and ride and car sharing. Recent SPT projects, services and activities relevant to this outcome include:

- Supporting Helensburgh and Lomond Cycleways development
- SPT Sustainable Travel Group
- Travel planning support and SPT Travel Plan seminar

